

CHARISMA®

Product Information

CHARISMA TOPAZ

ONE FOR THE BASICS



kulzer.com/try-topaz-one



KULZER
MITSUI CHEMICALS GROUP

ONE SHADE FOR ALL



YOUR EVERYDAY CASES MEET THE ALL-IN-ONE SOLUTION.

Charisma Topaz is known for combining the most successful and clinically experienced features of the Charisma composites. In addition to that, the universal composite for day-to-day natural restorations now offers a new one-shade solution for the majority of everyday cases.

Charisma Topaz ONE Shade blends seamlessly into the surrounding dentition, independent of the tooth shade, enabling restorations to simply disappear. This makes it easier than ever to achieve an outstandingly natural look even in the posterior region.

ONE SHADE FOR ALL – THANKS TO THE AMAZING ADAPTIVE LIGHT MATCHING:

Charisma Topaz ONE Shade determines the shade of the restoration by absorbing the lightwaves that are reflected by the surrounding tooth shade.

Occlusal cavities in different shaded artificial teeth filled with Charisma Topaz ONE Shade.



“The One Solution”

Start Video: kulzer.com/one-effect

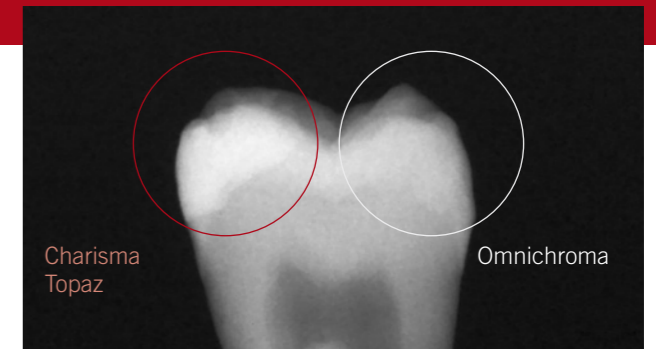
ONE EFFICIENT HANDLING

THIS CHEMISTRY FOR NATURAL RESTORATIONS TAKES OVER THE SHADE-MATCHING.

The Charisma brand is trusted all over the world for its easy handling, natural beauty and reliability in restorations that all again can be found in Charisma Topaz ONE Shade.

The Charisma Topaz highlights for easy handling:

- soft, non-slump consistency and minimal stickiness for efficient modelling
- extended working time
- excellent polish thanks to ultrafine nano filler particles
- approved to combine with GLUMA Bond Universal – the reliable and highly effective universal bonding solution from Kulzer.



Charisma Topaz ONE Shade also has a high radiopacity ensuring a reliable diagnosis. Source: Prof. C.-P. Ernst, Mainz, Germany

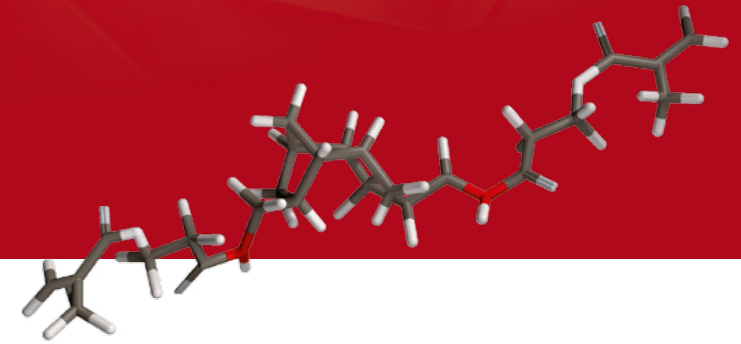


Excavated cavity with pulp capping. Case by: Dr. Marco Veneziani



The restoration matches perfectly into the tooth structure as well as to both neighboring teeth.

ONE RELIABLE SOLUTION



FREE
of BPA related
monomers



"The unique TCD-matrix is free of BPA related monomers."
Further information:
kulzer.com/tcd-matrix-topaz



"Some materials are the tools we need to achieve the perfect result. Seeking for perfection we forget simplicity – thinking that when things get easy, the outcome is not the best possible. That is not the case with Charisma Topaz. The outstanding handling characteristics made my life easier and every restoration flawless."

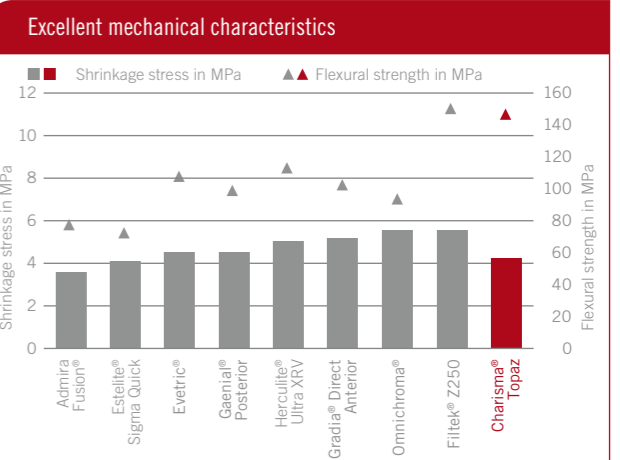
Dr. Matina Argyropoulou,
Thessaloniki, Greece

ACKNOWLEDGED DURABILITY THANKS TO THE UNIQUE TCD MATRIX.

Charisma Topaz ONE Shade comes with the unique TCD matrix from Kulzer and an optimised nano-hybrid filler system. It entails the unique combination of high flexural strength and low shrinkage stress the TCD-composites are known for – physical properties that have been tested and well-documented in clinical studies.

Why is that remarkable?

- **Long-lasting restorations:** Restoration fractures and secondary caries are the main reasons for filling failures. Charisma Topaz minimises both risks thanks to the exceptional TCD matrix and the optimised nano-hybrid filler system.
- **Assured biocompatibility:** The unique TCD matrix equally ensures that Charisma Topaz ONE Shade is entirely free of Bis-GMA and BPA-related monomers.



Source: Kulzer R&D, Wehrheim, Germany. Unpublished data. Documentation available.

Estelite® Sigma Quick is a trademark of Tokuyama Dental Corporation Inc. - Herculite®, XRV Ultra™ is a trademark of Kerr Corporation - Filtek® is a trademark of 3M Company - Admira Fusion® is a trademark of Voco GmbH - Evetric® is a trademark of Ivoclar Vivadent AG - Gradia® Direct Anterior is a trademark of GC Corporation - Omnichroma® is a trademark of Tokuyama Corporation

WANT TO TRY ONE?

kulzer.com/
try-topaz-
one

We have already packed your ONE Shade kit for you. Order now and try it out for yourself.



Art Code	Package	Content
Charisma Topaz ONE Shade		
66087170	Charisma Topaz Syringe Refill 1 x 4 g ONE	1 x 4 g
66087172	Charisma Topaz ONE Kit	2 x 4 g Syringes of Charisma Topaz in shade ONE / 1 x 4 ml bottle of GLUMA Bond Universal

Contact in Germany

Kulzer GmbH
Leipziger Straße 2
63450 Hanau
Germany
info.dent@kulzer-dental.com

kulzer.com