



Transform the way you work

Start injecting with our strongest
direct restorative ever

**G-ænial® Universal
Injectable**



Since 1921
100 years of Quality in Dental

Welcome to the future

G-ænial Universal Injectable is destined to be a game-changer in restorative dentistry. With its unique characteristics it will truly transform the way you work.

World-leading technologies have enabled GC to define a new benchmark composite offering **exceptional strength, unsurpassed polishability** and fantastic, tooth-blending aesthetics.

But you'll be amazed at how it is **injectable and shapeable all at the same time**. It adapts perfectly to the cavity floor, but lets you build, shape and contour while you are injecting – because **G-ænial Universal Injectable** doesn't slump!

It will also save you time and money because placement is so much faster and because you don't waste any material at all – you only use what is needed.

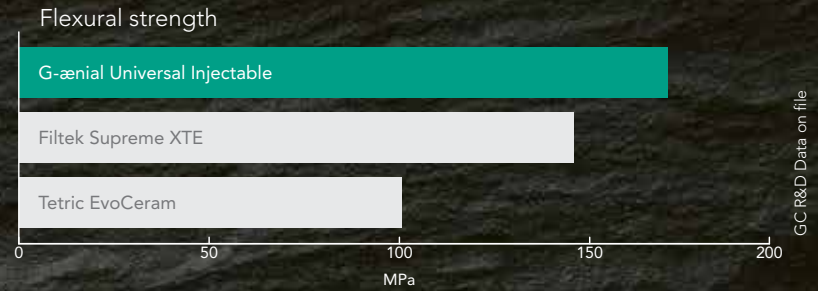
Try it for yourself and embrace the future!
You'll never look back.



Exceptional strength and wear resistance

Our strongest direct restorative ever*

GC's world-leading filler technologies have allowed us to develop an injectable material that is significantly stronger than most conventional paste composite materials. It's a new paradigm in thinking that a composite with a more flowable consistency is actually your strongest option!



Filtek Supreme XTE & Tetric EvoCeram are not trademarks of GC.

3 steps in 1 - shape and contour as you inject

Inject, shape and contour all at once

Because **G-ænial Universal Injectable** doesn't slump or string, you have total control to adapt, shape and contour as you inject for fast, effortless restorations. It adapts perfectly to the cavity floor and allows you to easily build contours, cusps and even proximal walls.



Unsurpassed polishability with beautiful aesthetics

Universal application for all cavity classes

Faster placement time with no wastage



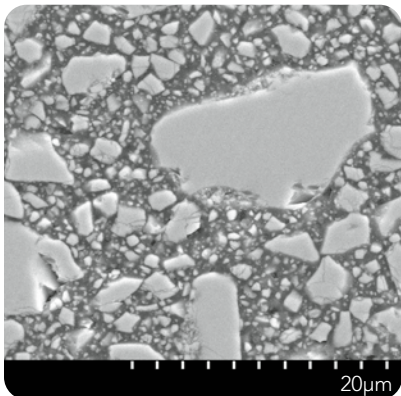
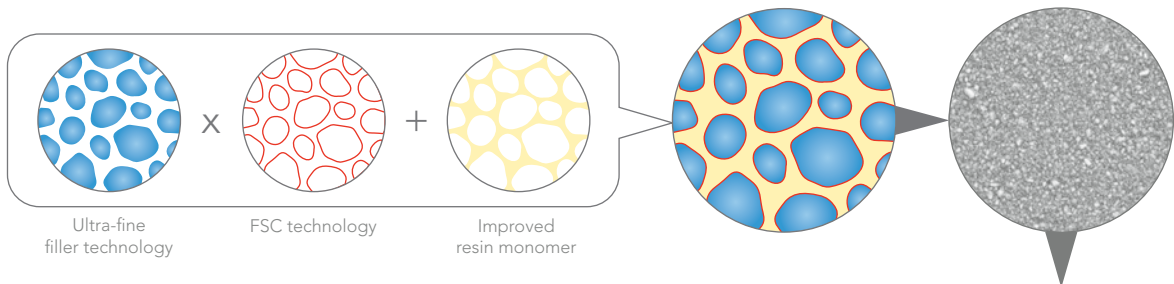
*based on ISO 4049 testing

3 in 1 Technologies



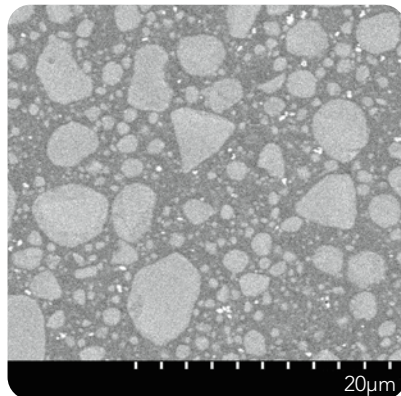
World-leading innovation and technology

Our latest full-coverage silane coating (FSC) technology makes it possible to homogeneously and densely disperse ultra-fine 150nm fillers in the improved resin monomer matrix giving unparalleled strength, durability and energy-absorbing resilience with high radiopacity – 252% Al.



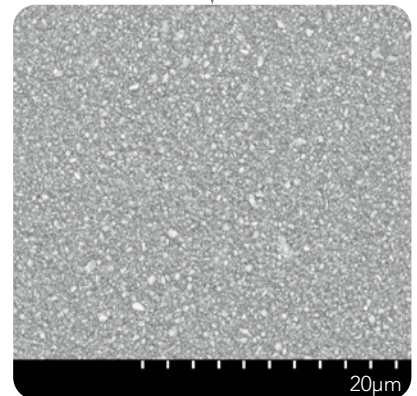
Micro Hybrid – Typically contains a range of glass and nano fillers of varying sizes

GC R&D Data on file



Nano composite – Typically contains spherical nano clusters made up of agglomerated nano fillers of varying sizes

GC R&D Data on file



G-aenial Universal Injectable – Ultra-fine 150nm homogeneously dispersed glass fillers

GC R&D Data on file

Innovative design delivers with ease and no slumping

With effortless extrusion, our syringe and unitips are a joy to use - delivery easy.

No stringing, no slump, no stress



Bendable tips for superior cavity adaptation



Easy extrusion for maximum comfort

Thin nozzle for controlled extrusion



3 in 1 Benefits

Exceptional strength



Unsurpassed surface integrity

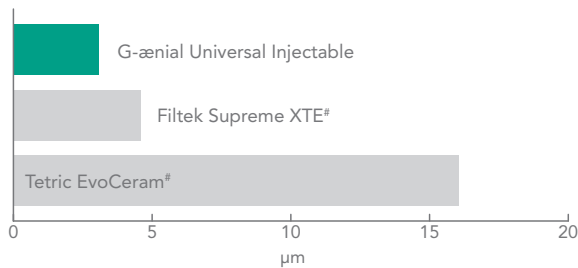


Long lasting aesthetics

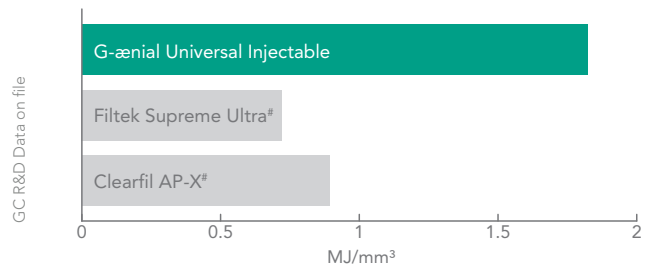
Superior strength, wear resistance and polish retention

G-ænial Universal Injectable's high-density structure not only provides exceptional strength, but also greater wear resistance, unmatched high polish retention and high resistance to discoloration for long-lasting aesthetics.

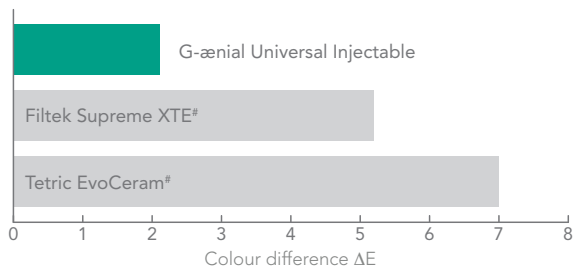
3-body wear



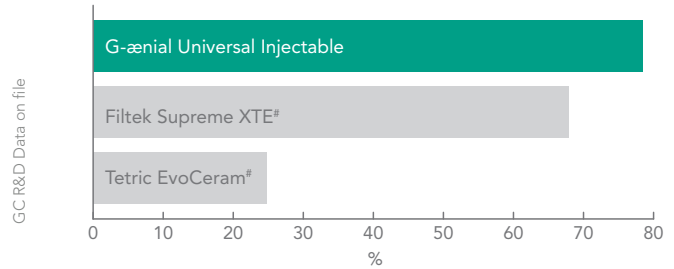
Resilience (Toughness)



Discolouration (at 7 days, 2% coffee solution)



Gloss Retention (After toothbrush wear – 12,000 cycles)



3 in 1 Savings

Less time



No waste



Less stress

Save time, save material, save stress

With far fewer steps than conventional composite, the time savings for restorations are significant. G-ænial Universal Injectable also eliminates wastage. You only use what you need! And because G-ænial Universal Injectable doesn't string or slump the whole process is easier and the end result is less stress in your day.

Conventional pastes



G-ænial Universal Injectable



Not trademarks of GC Corporation

* Interrelation among the handling, mechanical, and wear properties of the newly developed flowable resin composites. Imai et al. Journal of the Mechanical Behavior of Biomedical Materials 89 (2019) 72–80

Case Studies

Class II restoration



1. Removal of the old restoration & caries removal



2. Undercuts can easily be reached thanks to the bendable tips



3. Building the proximal wall using the enamel shade JE



4. Removal of the sectional matrix after building the wall



5. A class I procedure can now be followed; the dentin layer is created with the A4 shade



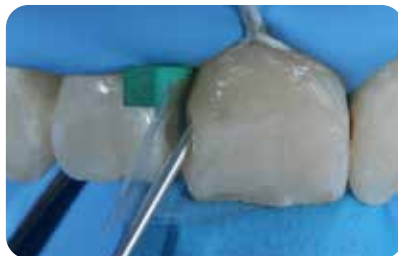
6. Final situation after finishing and polishing of the margins

Dr Javier Tapia Guadix – Spain

Class III restorations



1. Initial Class III cavities.



2. Injecting G-aenial Universal Injectable (A2).



3. Recall situation showing perfect integration.

Dr Ahmed Al-Jaff, Iraq

Management of early worn dentition



1. Early wear evident on 40-year old patient needing conservative management.



2. Old composite restorations removed and teeth micro-etched. Build up and restorations on the occlusal surface using alternate teeth technique.



3. Final restorations using a single shade injection technique, shade A1.

Dr Anthony Mak – Australia

Injection moulding technique



1. Model with wax-up of the desired tooth shape.



2. An impression tray is filled with EXACLEAR.



3. The desired shape is copied. The mould can be easily removed from the impression tray and the model.



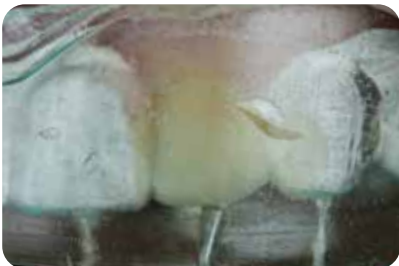
4. Holes are drilled in the EXACLEAR mould through which the composite will be injected.



5. Etching the enamel.



6. Application of the adhesive (G-Premio BOND).



7. Injection of the composite into the mould. This process is repeated for each tooth.



8. Finishing the vestibular and palatal margins.



9. Finishing the approximal margins.



10. Polishing the composite restorations.



11. Result after polishing.



12. Smile after treatment.

G-ænial® Universal Injectable from GC

Transform the way you work



"This material adapts beautifully and it retains cusp form without slumping"

"I was surprised at how well it flowed into deep restorations"

"Cuts restoration time very significantly and drastically reduces finishing time"

Dental Advisor vol. 35 No. 06 Nov/Dec 2018



Packages:

Syringe Refill

1x Syringe 1.7g (1.0 ml),
10x Dispensing Tip Long Needle, 1x Light-protective Cap

Unitip refill

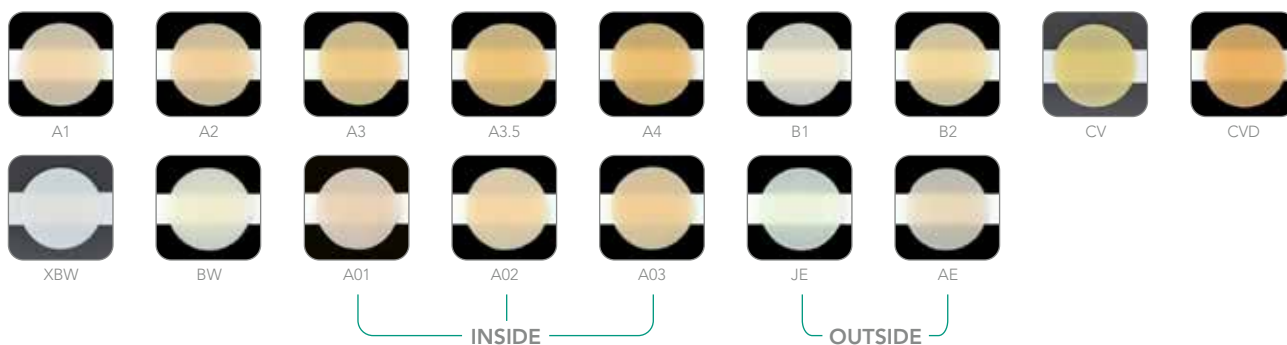
15x Unitips 0.27 g (0.16 mL)

Dispensing Tip Refill

30x Dispensing Tip Long Needle

Shades:

A1, A2, A3, A3.5, A4, B1, B2, CV, CVD, XBW, BW, AO1, AO2, AO3, JE, AE



GC EUROPE N.V.
Head Office
Researchpark
Haasrode-Leuven 1240
Interleuvenlaan 33
B-3001 Leuven
Tel. +32.16.74.10.00
Fax. +32.16.40.48.32
info.gce@gc.dental
<https://europe.gc.dental>

GC UNITED KINGDOM Ltd.
Coopers Court Newport Pagnell
Buckinghamshire MK16 8JS
United Kingdom
Tel. +44.1908.218.999
Fax. +44.1908.218.900
info.uk@gc.dental
<https://europe.gc.dental/en-GB>

