



The art of
creating injectable
aesthetics.



G-ænia[®]
Universal Flo
from GC

High-strength injectable
restorative composite



Since 1921
100 years of Quality in Dental

G-ænial® Universal Flo from GC

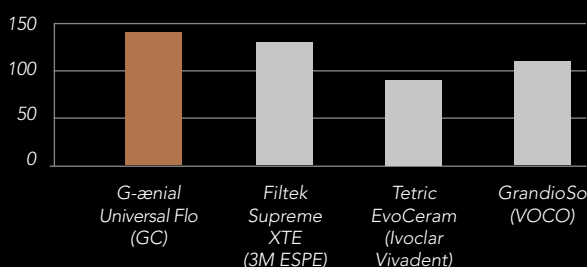
As a clinician you enjoy working with injectable materials, but they often have certain limitations. That's why GC developed for you G-ænial Universal Flo, a restorative composite strong enough to use on occlusal surfaces, yet sufficiently versatile to fit all clinical situations - from the smallest Class V restorations to the largest Class II cavities. Thanks to its injectable viscosity, **G-ænial Universal Flo provides the answer to many difficult cases, where you do not want to compromise between perfect placement, aesthetics or strength.**

Injectable... yet incredibly strong

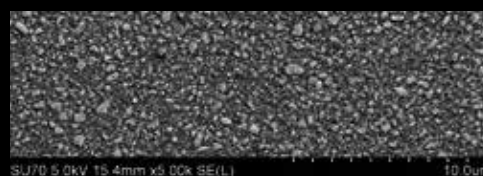
thanks to the latest filler technology from GC

The ultra-fine Strontium particles in G-ænial Universal Flo have been selected with a high translucency to guarantee a **high level of aesthetics**. Its high acid resistance and **radiopacity** provide durability and easy follow-up. Additionally, GC developed a proprietary silanation treatment leading to a homogeneous dispersion of fillers and a stronger adhesion between the glass particles and the resin matrix – for an exceptional strength and wear resistance! This unique composition, combined with a high filler load will ensure **durable restorations with a long-lasting polish.**

Flexural Strength (MPa)



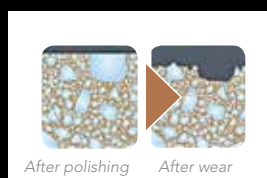
Source: Dental Materials Research Foundation, University of ACTA, Amsterdam. Data on file.



A **unique filler technology**: 200nm Strontium glass particles homogeneously dispersed in the matrix
SEM image (x2000)*

Injectable... yet surprisingly durable

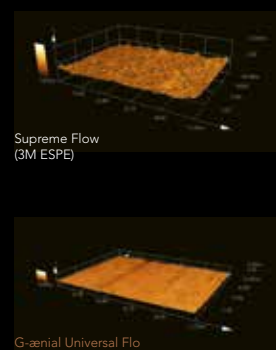
featuring a top-of-class 3-body wear of 3µm*



Composite materials containing macro fillers are more likely to exhibit a higher wear, due to filler drop-out and hydrolytic degradation. This can have a negative impact on their gloss retention and durability.



G-ænial Universal Flo contains ultra-fine fillers which are individually silanated and homogeneously dispersed inside the resin matrix. Thanks to this unique GC technology, **the wear resistance of the material is multiplied** and its gloss is retained over time.



Confocal laser microscope images of comparative toothbrush wear*

*Source: GCC R&D. Data on file.

Injectable... yet truly aesthetic

from the smallest Class V to the largest Class II

Another strength of G-ænial Universal Flo is that it successfully unites **perfect adaptation** with a great **stability**, which allows an easy build-up of anatomical forms.

Its unique **self-polishing ability**, together with excellent colour adaptation and gloss retention ensure invisible and durable restorations to your patients, while offering you the **easy handling** you are looking for.

The **wide range of shades in three translucency levels** promises unlimited possibilities to suit your most challenging cases!



Dr. U. Krueger-Janson,
Germany



Dr. G. Politano,
Italy



Injectable... yet genuinely stackable

supported by a unique ergonomic syringe design



High amount of product per syringe
3.4g to cover all your daily cases!

Easy application

Thanks to a long, thin and textured nozzle, making sure the product does not stick to it

Ergonomic solution

Comfortable grip, arched flange and smooth extrusion thanks to a thin syringe diameter



Two types of dispensing tips available

Plastic or Needle, to suit your preferences

Rectangle-shaped flange

To prevent the syringe from rolling

Economical advantage

The residual amount of paste in the syringe is lower than 0,1mL



Injectable... yet really universal

for all cavity indications – and more!



Class I, II, III, IV, V cavities

Splinting and MI cavities

Now also indicated for chairside indirect technique!



G-aenial Universal Flo

1x3.4g (2mL), 20 Dispensing Tips III Plastic, 1 light-protective cover

Available in 15 shades and three levels of translucency:

Standard shades: BW, A1, A2, A3, A3.5, A4, B1, B2, B3, C3, CV

Inside shades: AO2, AO3

Outside shades: JE, AE

Dispensing tips III Plastic refill (30 pieces)

Dispensing tips III Needle refill (30 pieces)

Standard shades



Inside shades



Outside shades



GC EUROPE N.V.

Head Office
Researchpark
Haasrode-Leuven 1240
Interleuvenlaan 33
B-3001 Leuven
Tel. +32.16.74.10.00
Fax. +32.16.40.48.32
info.gce@gc.dental
<https://europe.gc.dental>

GC UNITED KINGDOM Ltd.

Coopers Court Newport Pagnell
Buckinghamshire MK16 8JS
United Kingdom
Tel. +44.1908.218.999
Fax. +44.1908.218.900
info.uk@gc.dental
<https://europe.gc.dental/en-GB>

