



Made to fit
all your adhesive challenges.
Designed to last



G-CEM
LinkForce™
from GC

Dual-cure
adhesive luting cement
for all indications,
all substrates



Since 1921
100 years of Quality in Dental

G-CEM LinkForce from GC



Looking for a standardised luting solution?

Different types of restorations ... Different types of substrates ... This is getting too confusing!

From inlays/onlays, overlays, veneers and tabletops to CAD/CAM prosthetics, the choice between different types of restorations has become wider. Add the introduction of new substrates such as zirconia, lithium disilicate and hybrid ceramics and it is no surprise that mastering all the cementation procedures for all indications is now a difficult challenge.

Is there one solution that can adapt to all situations?

Imagine a universal solution that offers predictable results and allows you to work in a standardised way. If this is what you are looking for, look no further. GC has developed for you a universal adhesive resin cement that ensures a strong bond to all substrates – in all indications, without compromises.

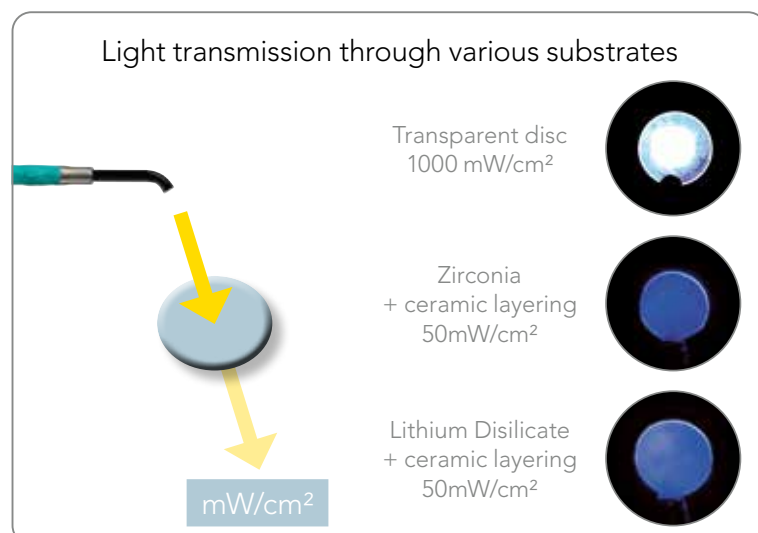
G-CEM LinkForce from GC - the universal and powerful solution to all your adhesive cementation challenges

One system, three base elements:
that's all it takes to create strong adhesion in all situations



G-CEM LinkForce's excellent self-curing capability secures your adhesion at all times

Did you know that depending on the type of prosthetic material, only a small percentage of the light is transmitted through your restorations? Since it is difficult to rely completely on light activation, G-CEM LinkForce has been designed to offer perfect adhesion, even in self-cure mode.



A performance you can trust at e

G-Premio BOND

Bonding with no compromises to ALL preparations

Pictures courtesy of Dr V. Nita, Romania



Bonding to all preparations

Even when the preparation involves a composite core build-up or metal abutment, the three functional monomers contained in G-Premio BOND will ensure reliable adhesion.



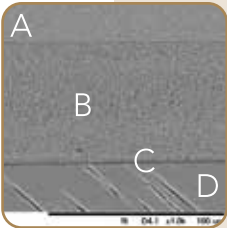
Three choices of etching mode

G-Premio BOND can be used in all etching modes (self-etch, selective etch and total-etch) with virtually no post-operative sensitivity.



Easy bonding application

Thanks to its viscosity and wettability, a thorough application of G-Premio BOND is easy to achieve.



Clear drying procedure and 3µm film thickness

With five-second drying at maximum air pressure a minimal film thickness of 3µm is achieved, which guarantees perfect adaptation of the prosthesis.

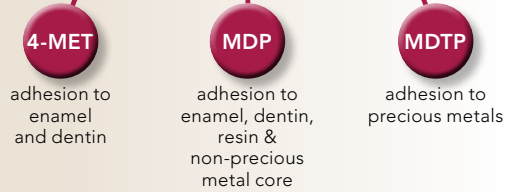
SEM picture of CERASMART restoration (A) bonded to dentin (D) using G-Premio BOND (C) and G-CEM LinkForce (B)
Source: GC R&D, Japan



The choice between light-curing the bonding - or not

Light-curing the bonding ensures immediate control of the polymerisation and reduces the number of procedural steps.

Dual-curing (when mixed with G-Premio BOND DCA) ensures reliable polymerisation of the bonding layer, for instance in case of post luting.



G-Multi PRIMER

Ensuring a stable bond to ALL restorations



One primer for all substrates

G-Multi PRIMER uses three different chemical agents to ensure perfect adhesion in all situations. By adding silane to the primer and not to the bonding, stability of the adhesion is assured.



Each step of the luting procedure

G-CEM LinkForce Providing a strong link in ALL indications



The right shade for each use
After selecting from the four available shades, you will appreciate the easy automix dispensing directly into the restoration or with an endo tip in the root canal.



Seating and ensuring a perfect adaptation
Optimum wettability and viscosity ensure that the luting paste is well spread. Its film thickness of 4µm further guarantees the adaptation of the prosthetic piece onto the abutment.



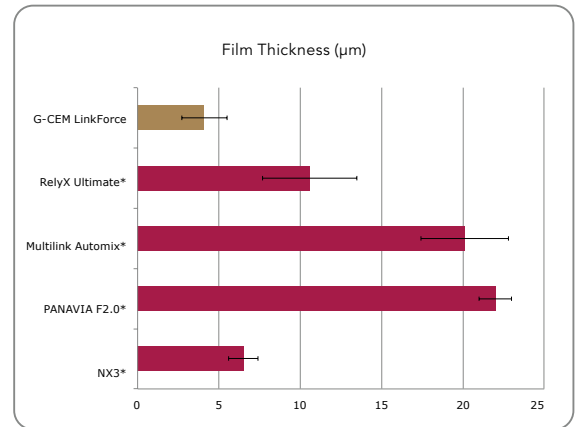
Convenient excess removal
The ability to tack-cure any excess for 1-2 seconds makes excess removal easier.



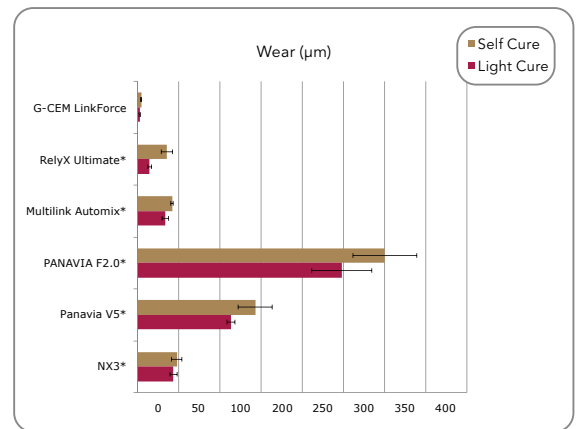
Efficient polymerisation in self-cure and light-cure modes
Thanks to a perfect ratio of initiators, polymerisation is assured, even when the light cannot pass through the restoration.



High polishability and wear resistance
The use of ultra-fine homogeneously dispersed fillers in high concentration delivers outstanding wear resistance, even when margins are located on occlusal surfaces.

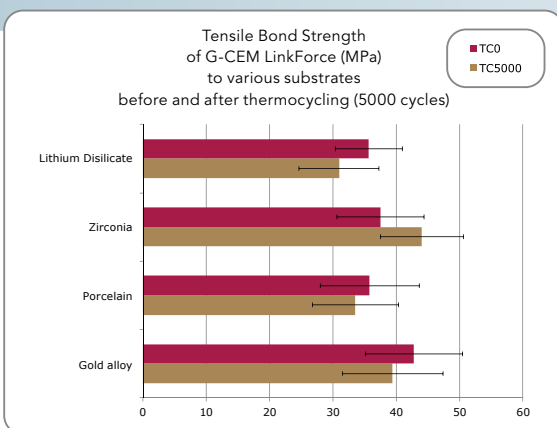


Source: GC R&D, Japan, 2015



Source: GC R&D, Japan, 2015

* Not a trademark of GC Europe



Source: GC R&D, Japan, 2015

GC used its long-term knowledge in the field of primers to develop G-Multi PRIMER. It offers not only strong adhesion to all substrates (even precious alloys), but also stable adhesion over time.

What are the important features you are looking for when....



Searching for a way to master all your crown and bridge challenges?

- A **standardised procedure** for the most common cases?
- **Efficient bonding** not only on natural teeth but also on core build-ups and metal abutments?
- The **option to etch or not**, with virtually no post-operative sensitivity?
- A **universal primer** that bonds to all surfaces, from ceramics to precious metals?



Looking for the perfect partner for veneers?

- **Easy positioning** and removal of any excess?
- **Efficient light-curing** of bonding and cement?
- A **shade assortment fitting all situations**, from discoloured up to bleach preparations?
 - A set of corresponding **try-in pastes** to confirm the shade selection?
- **Fluorescence** to contribute to the final aesthetic result?



Seeking the optimal solution for post luting?

- The **possibility to etch dentin** in deep canals?
- **Perfect polymerisation** of the bonding when mixed with the dual-cure activator in dark canals?
 - Low viscosity for **perfect post insertion**?
 - Excellent **self-cure mode** of the paste for long-lasting bond strength?



Pursuing the right approach for inlays, onlays and overlays?

- A **strong hold**, even on non-retentive preparations?
- **Efficient curing**, even under opaque restorations?
- Marginal stability and **wear resistance** at occlusal margins?
 - A material perfectly suited for **all CAD/CAM restorations**, including hybrid ceramics such as CERASMART™270?

You can count on
G-CEM LinkForce

in all clinical situations, for each indication and every kind of substrate

G-CEM LinkForce

Strong and universal adhesive cement
at your fingertips!

Four different shades and their corresponding Try-in Pastes to cover all your aesthetic needs



Translucent
(clear translucent)
Perfect for very thin restorations to preserve the original shade



A2
(A2 translucent)
The standard for luting most of your prosthetic pieces



Opaque
(universal opaque)
Used to mask discoloured substrates when needed



Bleach
(bleach opaque)
Adapted for ultra-white restorations to increase opacity and value

Available Packages

System Kit

- G-CEM LinkForce A2, G-CEM LinkForce Translucent, G-Premio BOND, G-Premio BOND DCA, G-Multi PRIMER, G-CEM Try-in Paste Try-in Pastes (A2 & Translucent), GC Etchant, Accessories

Starter Kits

- G-CEM LinkForce A2, G-Premio BOND, G-Multi PRIMER, Accessories
- G-CEM LinkForce Translucent, G-Premio BOND, G-Multi PRIMER, Accessories

Refills

- Syringe 8.7 g (5 mL) (Translucent / A2 / Opaque / Bleach)
- Try-in Paste 1.5 g (1.2 mL) (Translucent / A2 / Opaque / Bleach)
- G-Premio BOND, 5 mL
- G-Premio BOND DCA, 3 mL
- G-Multi-PRIMER, 5 mL



GC EUROPE N.V.

Head Office
Researchpark
Haasrode-Leuven 1240
Interleuvenlaan 33
B-3001 Leuven
Tel. +32.16.74.10.00
Fax. +32.16.40.48.32
info.gce@gc.dental
<https://europe.gc.dental>

GC UNITED KINGDOM Ltd.

Coopers Court Newport Pagnell
Buckinghamshire MK16 8JS
United Kingdom
Tel. +44.1908.218.999
Fax. +44.1908.218.900
info.uk@gc.dental
<https://europe.gc.dental/en-GB>

