

CHARISMA®

Product Information

CHARISMA DIAMOND

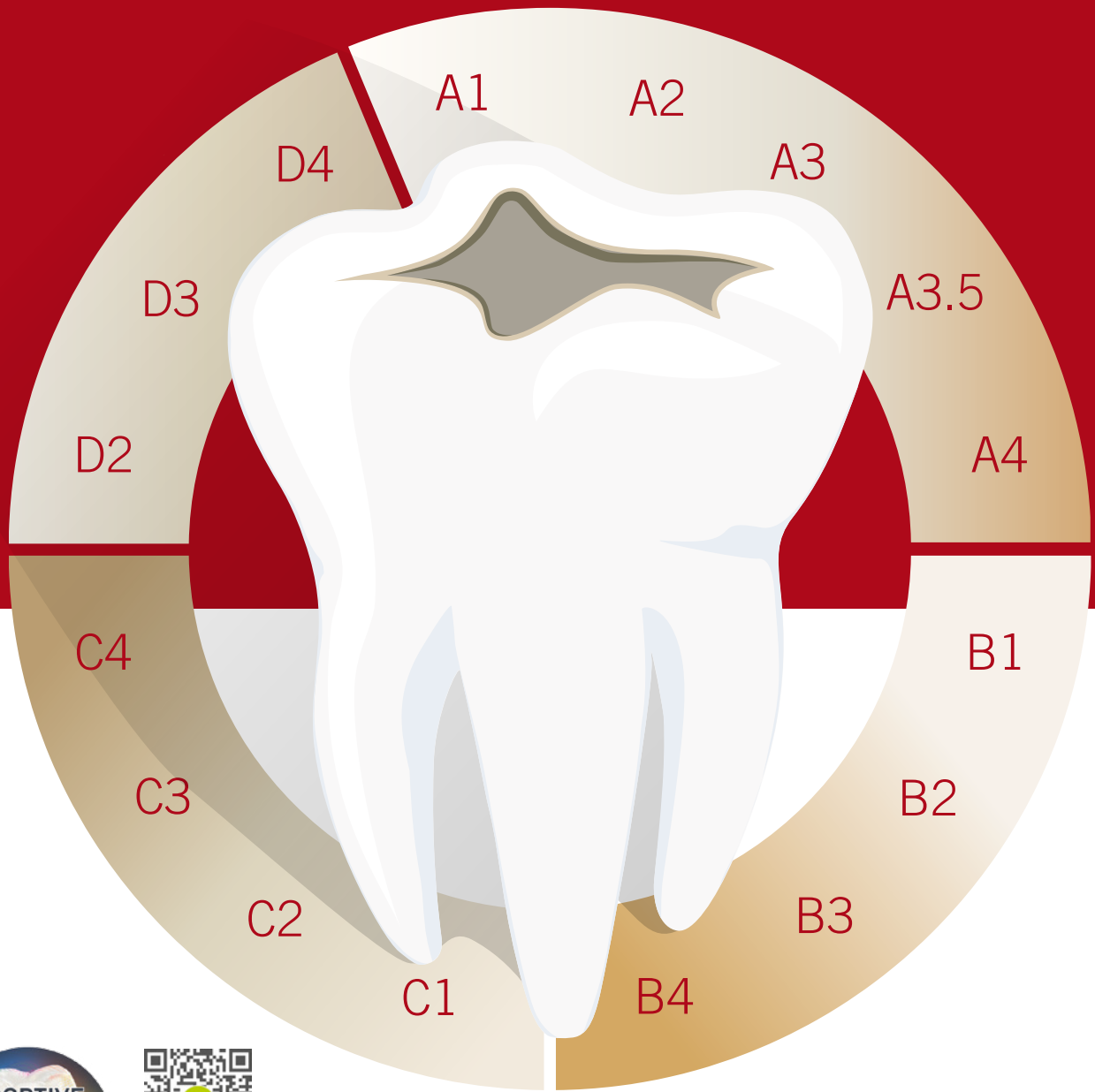
# ONE FOR THE BASICS



[kulzer.com/try-diamond-one](http://kulzer.com/try-diamond-one)



**KULZER**  
MITSUI CHEMICALS GROUP



"The One Solution"  
Start Video: [kulzer.com/one-effect](http://kulzer.com/one-effect)

# ONE SHADE FOR ALL

## **ALWAYS GRAB THE RIGHT SHADE FOR NATURAL-LOOKING RESTORATIONS.**

Since its launch in 2010, Charisma Diamond has expanded the boundaries of aesthetics, quality and performance. With the new Charisma Diamond ONE Shade it is easier than ever to achieve an outstandingly natural look even in the posterior region.

Charisma Diamond ONE Shade blends seamlessly into the surrounding dentition, independent of the tooth shade, enabling restorations to simply disappear. This offers a new one-shade solution for the majority of everyday cases.

## **ONE SHADE FOR ALL – THANKS TO THE AMAZING ADAPTIVE LIGHT MATCHING:**

Charisma Diamond ONE Shade determines the shade of the restoration by absorbing the lightwaves that are reflected by the surrounding tooth shade.



Occlusal cavities in differently shaded artificial teeth filled with Charisma Diamond ONE Shade.





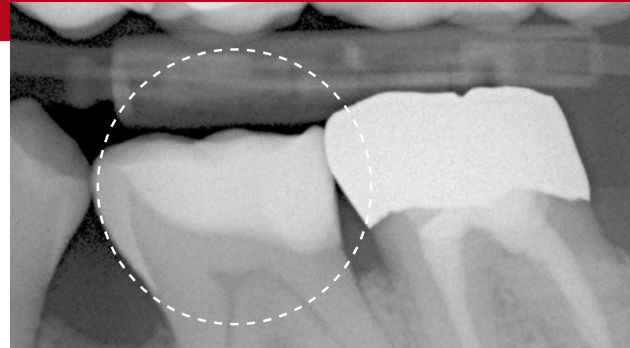
# ONE EFFICIENT HANDLING

## **NATURAL BEAUTY WITHOUT SHADE-MATCHING. EASY!**

The handling is as easy as the well-established handling of Charisma Diamond that has been acknowledged by practitioners worldwide for over 10 years.

The Charisma Diamond highlights for easy handling:

- non-slump consistency and minimal stickiness for easy sculpting
- extended working time
- excellent polish thanks to ultrafine nanofiller particles
- approved to combine with GLUMA Bond Universal – the reliable and highly effective universal bonding solution from Kulzer.



Charisma Diamond ONE Shade also has a high radiopacity ensuring a reliable diagnosis. Source: Prof. C.-P. Ernst, Mainz, Germany



Excavated and prepared cavity.  
Case by: Nicola Scotti, University of  
Turin, Italy



Finished Charisma Diamond ONE  
shade restoration tooth 26. Excellent  
colour match.



*"For me, the right composite has to let me do my work and keep up the results. Charisma Diamond does it for me. Successful characteristics? Check. Experienced material? Check. One shade for the less demanding cases? Good to know things are getting easier by the clock."*

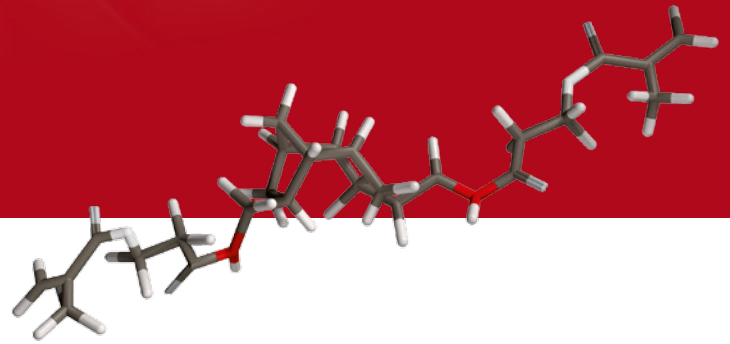
**Dr. Dinos Kountouras,  
Queensland, Australia**

**FREE**  
of BPA related  
monomers



"The unique TCD-matrix is free of BPA-related monomers."  
Further information:  
[kulzer.com/tcd-matrix-diamond](http://kulzer.com/tcd-matrix-diamond)

# ONE RELIABLE SOLUTION



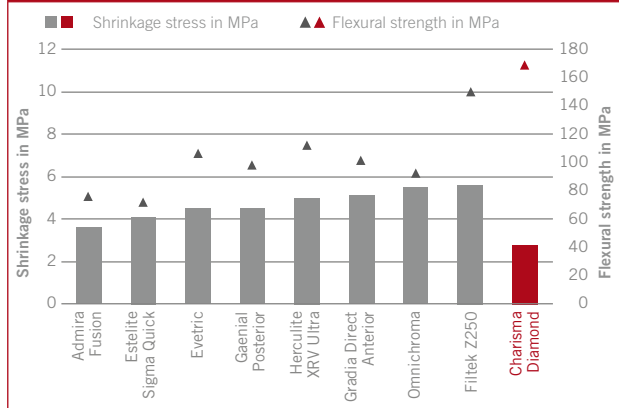
## EXTREMELY DURABLE: THE UNIQUE TCD-MATRIX WITH OPTIMISED NANO-HYBRID FILLER SYSTEM.

ONE Shade benefits from the unique combination of high strength and low shrinkage stress of Charisma Diamond which has been well-documented and tested in clinical studies.

Why is that remarkable?

- **Long-lasting restorations:** The unique TCD-matrix and the optimised nano-hybrid filler system make Charisma Diamond highly resistant against mastication forces. This minimises restoration fractures, that are, together with secondary caries, the main reasons for filling failures.
- **Assured biocompatibility:** Through the usage of our TCD-matrix, Charisma Diamond ONE Shade is entirely free of bis-GMA and BPA-related monomers.

### Excellent mechanical characteristics



Source: Kulzer R&D, Wehrheim, Germany. Unpublished data. Documentation available.

Estelite® Sigma Quick is a trademark of Tokuyama Dental Corporation Inc. · Herculite®, XRV Ultra™ is a trademark of Kerr Corporation · Filtek® is a trademark of 3M Company · Admira Fusion® is a trademark of Voco GmbH · Evertic® is a trademark of Ivoclar Vivadent AG · Gradia® Direct Anterior is a trademark of GC Corporation · Omnichroma® is a trademark of Tokuyama Corporation

# WANT TO TRY ONE?



kulzer.com/  
try-diamond-  
one

We have already packed your ONE Shade kit for you. Order now and try it out for yourself.

Art Code	Package	Content
<b>Charisma Diamond ONE Shade</b>		
66087169	Charisma Diamond Syringe Refill 1 x 4 g ONE	1 x 4 g
66087171	Charisma Diamond ONE Kit	2 x 4 g Syringes of Charisma Diamond in shade ONE / 1 x 4 ml bottle of GLUMA Bond Universal

## Contact in Germany

Kulzer GmbH  
 Leipziger Straße 2  
 63450 Hanau  
 Germany  
 info.dent@kulzer-dental.com



# WANT TO TRY ONE?



kulzer.com/  
try-diamond-  
one

We have already packed your ONE Shade kit for you. Order now and try it out for yourself.

Art Code	Package	Content
<b>Charisma Diamond ONE Shade</b>		
66087168	Charisma Diamond Syringe Refill 1 x 4 g ONE	1 x 4 g
66087171	Charisma Diamond ONE Kit	2 x 4 g Syringes of Charisma Diamond in shade ONE/ 1 x 4 ml bottle of GLUMA Bond Universal

## Contact in Germany

Kulzer GmbH  
 Leipziger Straße 2  
 63450 Hanau  
 Germany  
 info.dent@kulzer-dental.com